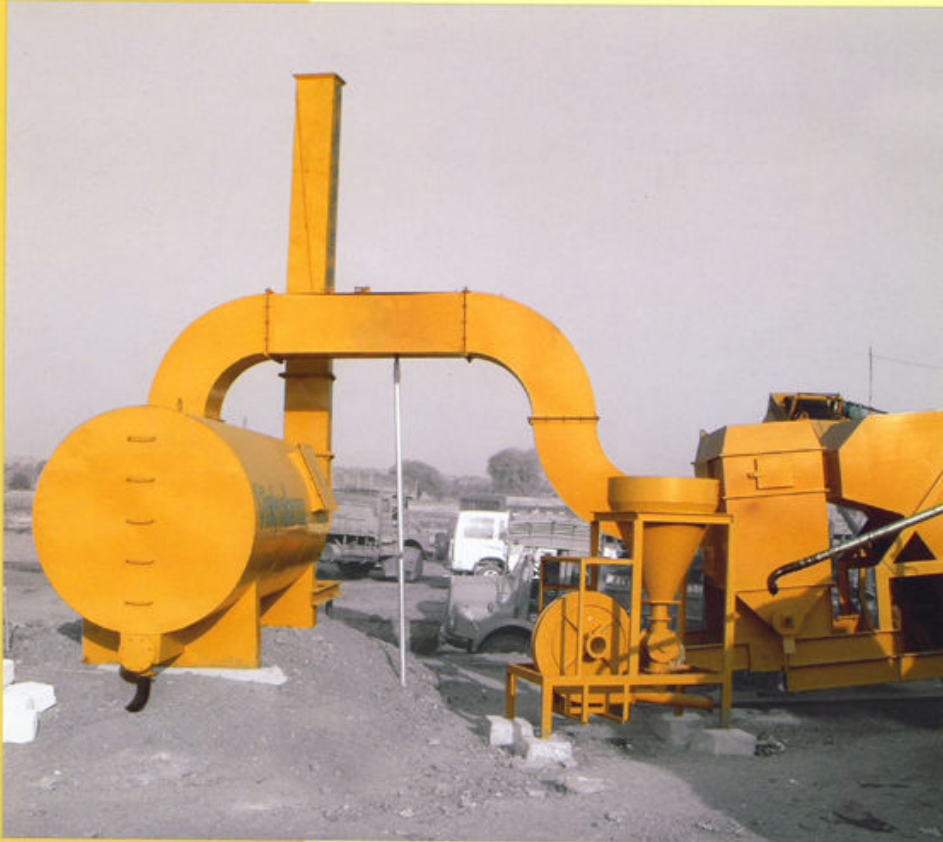


Vishvakarma

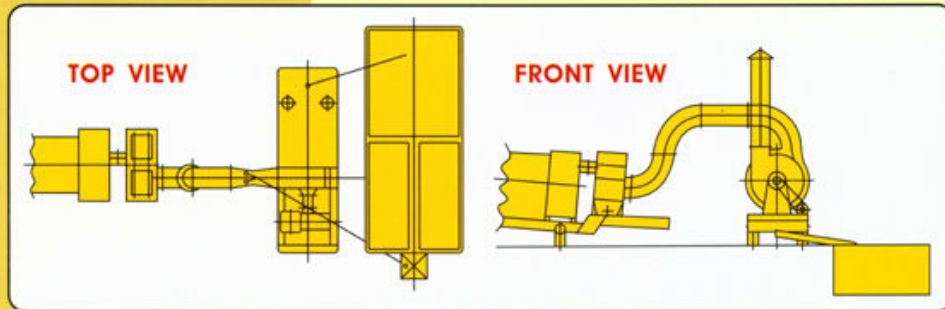
POLLUTION CONTROL SYSTEM



*** Quality that you can rely upon ***

Vishvakarma

POLLUTION CONTROL SYSTEM FOR DRUM MIX PLANT



Specifications

DIMENSION	: 1.8 m x 3 m
CAPACITY (ACFM)	: 10500 / 14500
WATER PUMP	: 2 H.P.

Sludge Pond Data

DIMENSION	: 7.0 x 3.0 x 1.5 mtrs.
-----------	-------------------------

- * Subject to location and aggregate dust content
- * All the ratings are subject to change.



OPERATION SEQUENCE

- Exhauster inducts hot gases from the Thermo Drum Unit.
- Higher Pressure Water Jet is sprayed on to the gases which forms water based slurry and is diverted to the sludge Pond.
- Air pressure is reduced and remaining gases are exhausted.
- The pond is made such that, the surface water is again reused.

OTHER INFORMATION

Nozzles and Water Bearing Plates are made of Stainless Steel to resist corrosion. The Sludge Pond requires to be cleaned once a week based on normal site conditions. As a safety measure, always surround / cover the Sludge Pond with wire fence since, working temperature of water may be above 80 Degree. It is also necessary to have the Drain pipe submerged in pond.

Note : Specification are subject to change without notice due to development.

SINCE
1981



Vishvakarma Road Equipment Co (P) Limited.

Near S. D. Chambers, Borsad - 388540. Gujarat (INDIA)

Phone : 02696 - 221317, 221217, 223297 Fax : 222926

E- mail : vreco@vishvakarma.com Website : www.vishvakarma.com